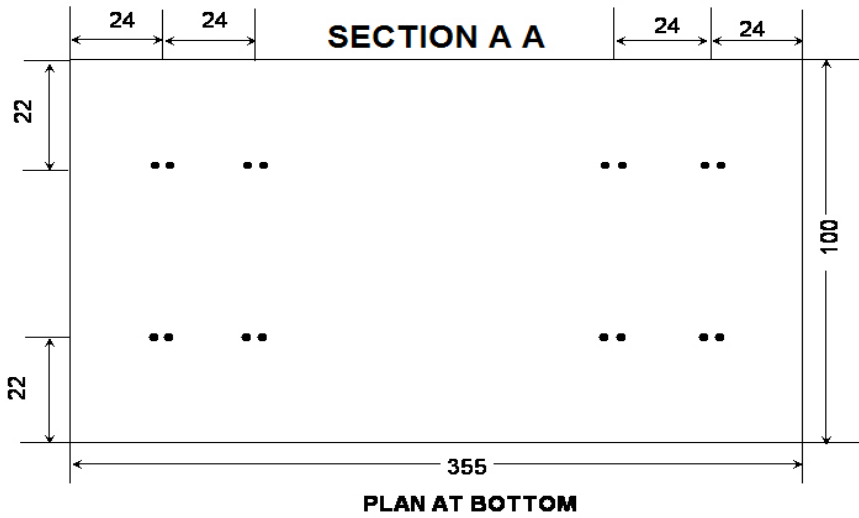
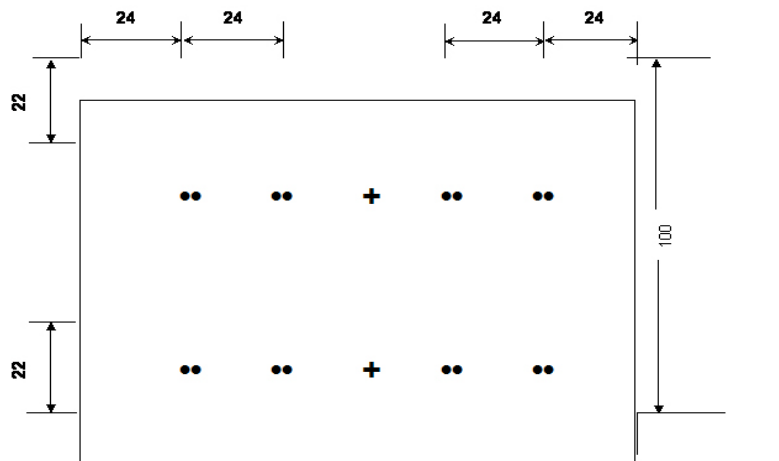
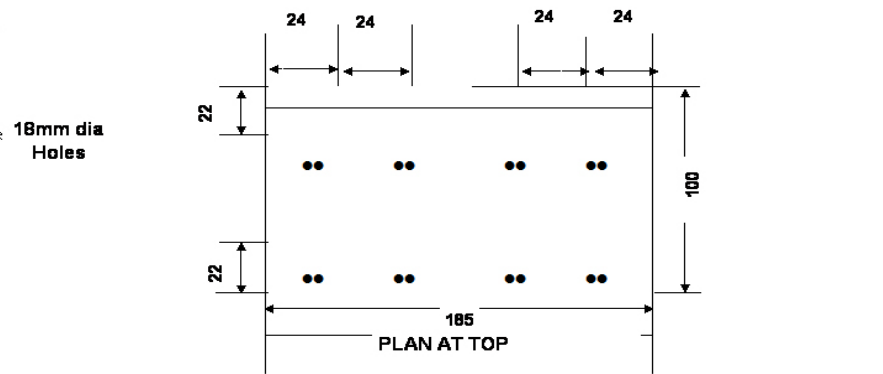
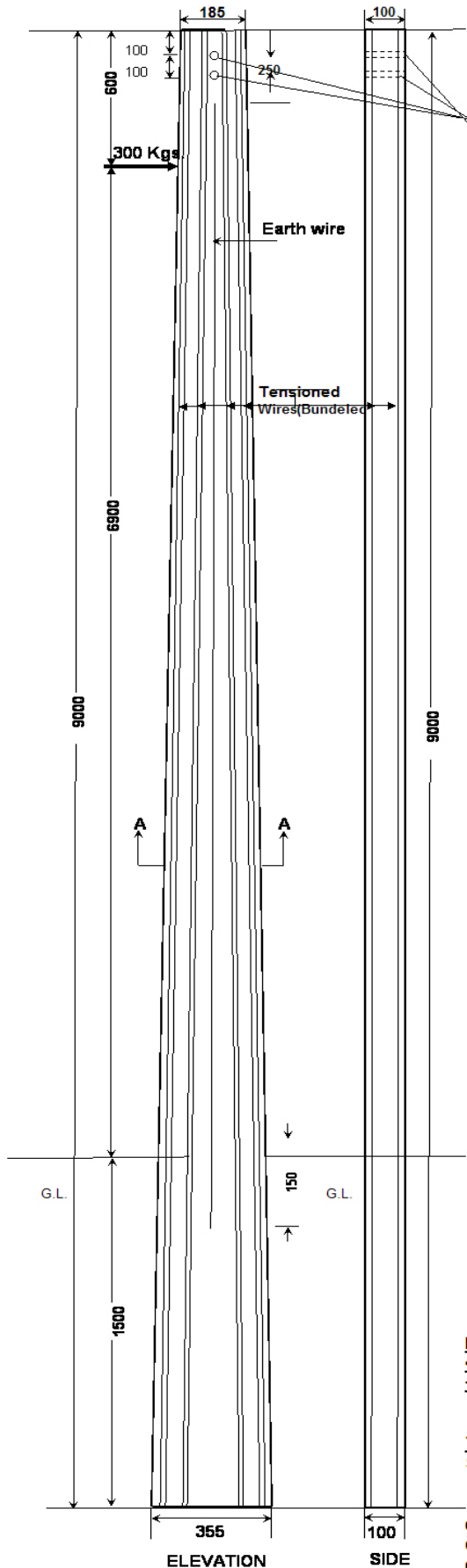


REINFORCEMENT DETAILS OF 9.0M/300KG PRESTRESSED CEMENT CONCRETE POLES (FACTOR OF SAFETY = 2.0)



Location of holes as per REC Standards
 • Denotes Tensioned Wire
 + Possible Position of Earth Wire

TECHNICAL GUARANTEE PARTICULARS OF 9.0mtr/300KG WORKING LOAD SECTION:

A).TOP	185 X 100 MM
B).BOTTOM	355 X 100 MM
QUANTITY OF CONCRETE	0.243M ³
CONCRETE GRADE	M-400
OVERALL LENGTH SUPPORT	9.0MTR
PLANTING DEPTH	1.5 MTR
DIA METER OF PRESTRESSING WIRE	4 MM
NUMBER OF TENSIONED WIRES	16 NOS
PRE-TENSIONED APPLIED TO EACH 4MM WIRE	1760KGS
MINIMUM CUBE STRENGTH OF CONCRETE AT 28 DAYS	400 KG/CM ²
CLEAR COVER	20 MM
FACTOR OF SAFETY	2.0.
WORKING LOAD	300 KGS
ULTIMATE LOAD	600 KGS
WEIGHT OF POLE (THEORETICAL)	607 KGS
LOAD APPLICATION AT A POINT FROM THE TOP	600 MM
UNTIMATE TENSION STRENGTH FOR 4MM WIRE	17500KG/CM ²